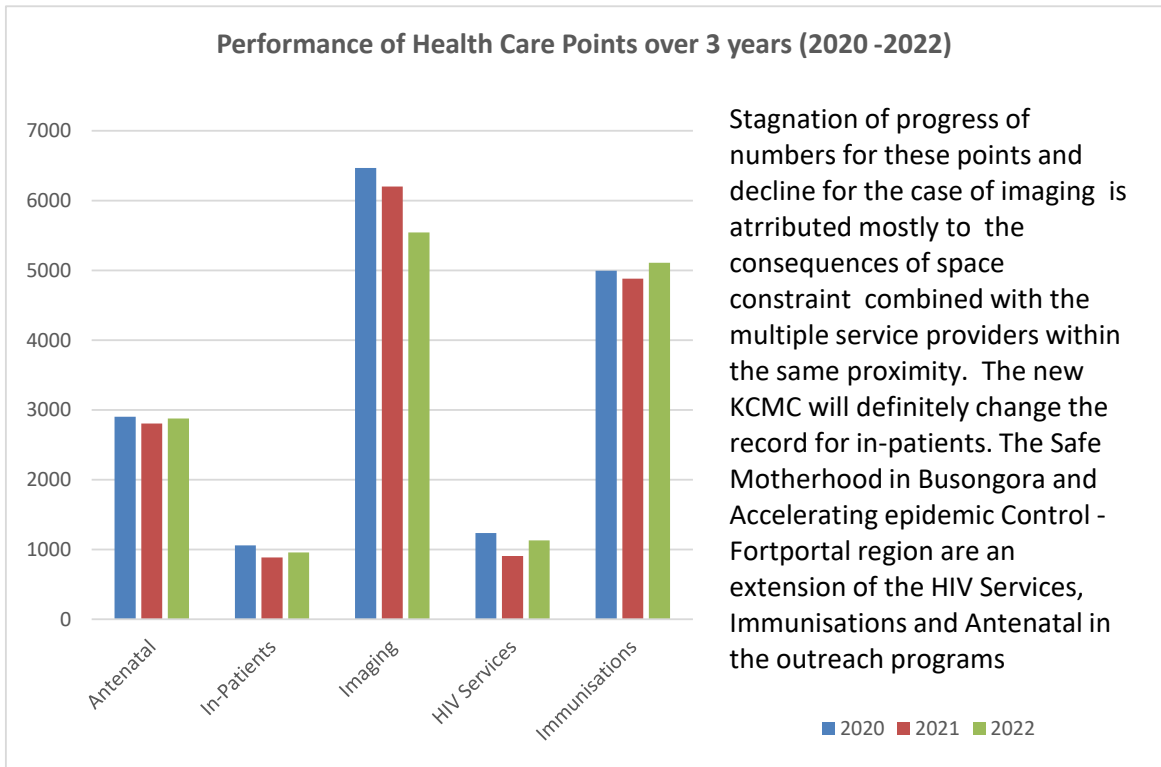
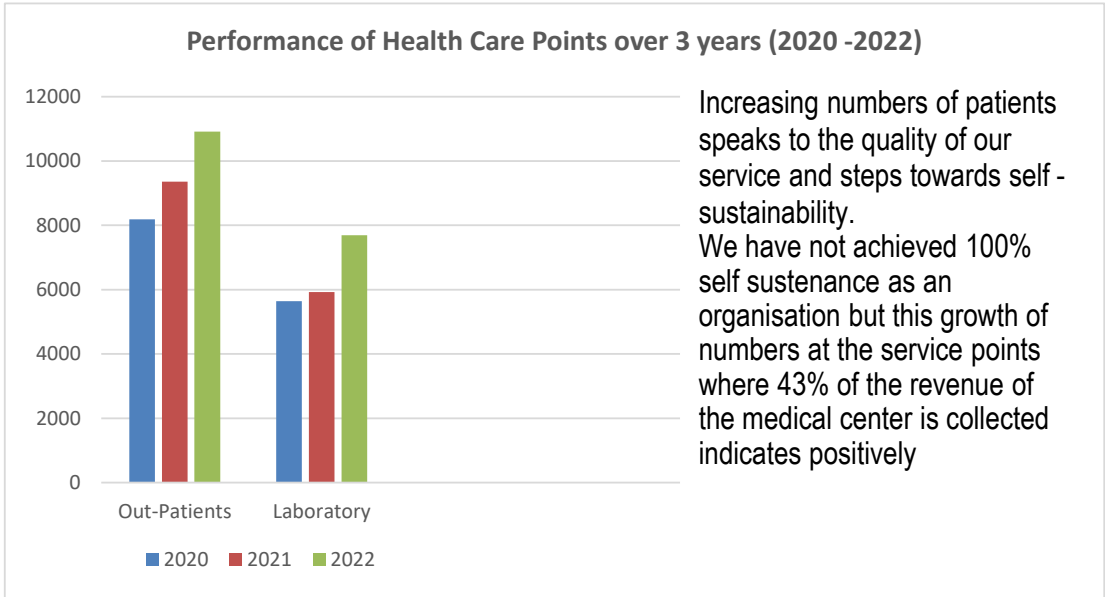
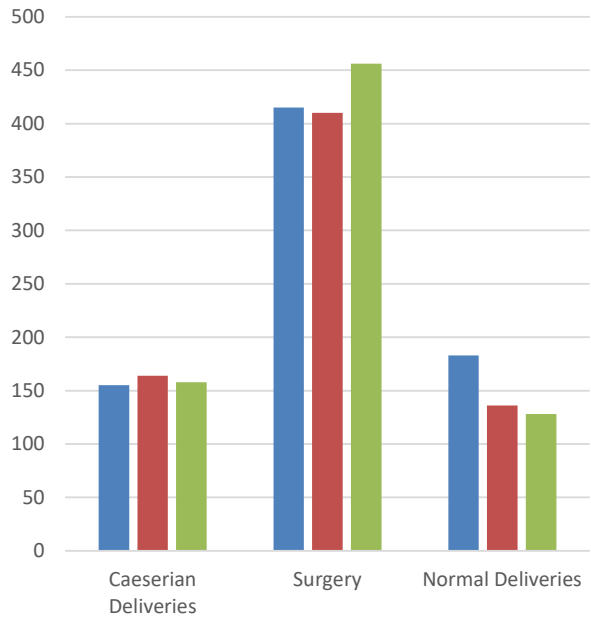


**KASESE COMMUNITY HEALTH AND EDUCATION FOUNDATION
ANNUAL REPORT FOR THE YEAR 2022 (98% Accurate)**

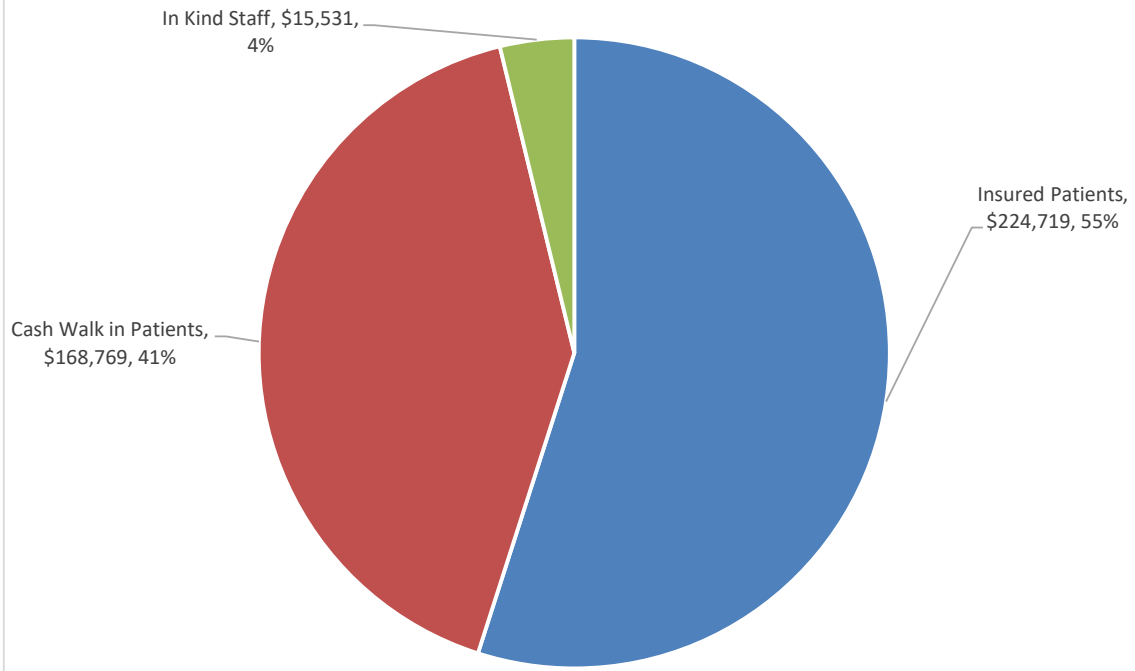


Performance at Health Care service points over 3 years (2020 -2022)

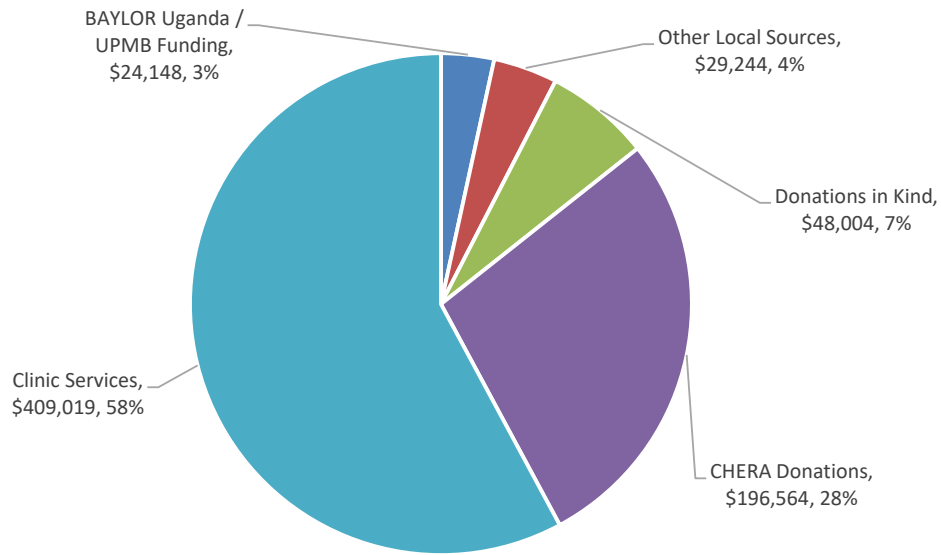


The resolve of compromised privacy for the mothers and their new born babies will boost the numbers we register at all these points. The reason why many of the mothers that do antenatal with us dont choose KCMC to deliver their babies has been lack of privacy. The price of all these services at KCMC is higher than at the neighboring service centres and true this too has been a factor to take them away. But, there is quite a number that we will attract when we move into the New KCMC

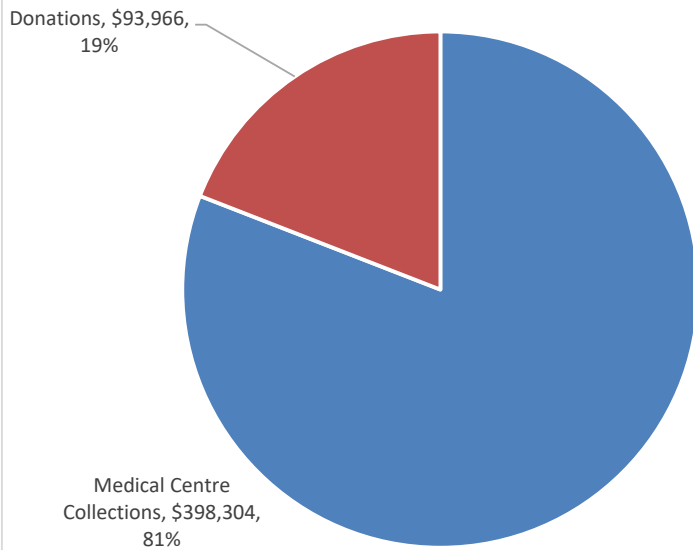
KCHEF 2022 - Source of Local Revenue for the Medical Centre (\$409,019)



KCHEF 2022 - Source of Total Income (\$706,978)



KCHEF 2022 - Source of Funds for the Operational Costs(\$492,270)

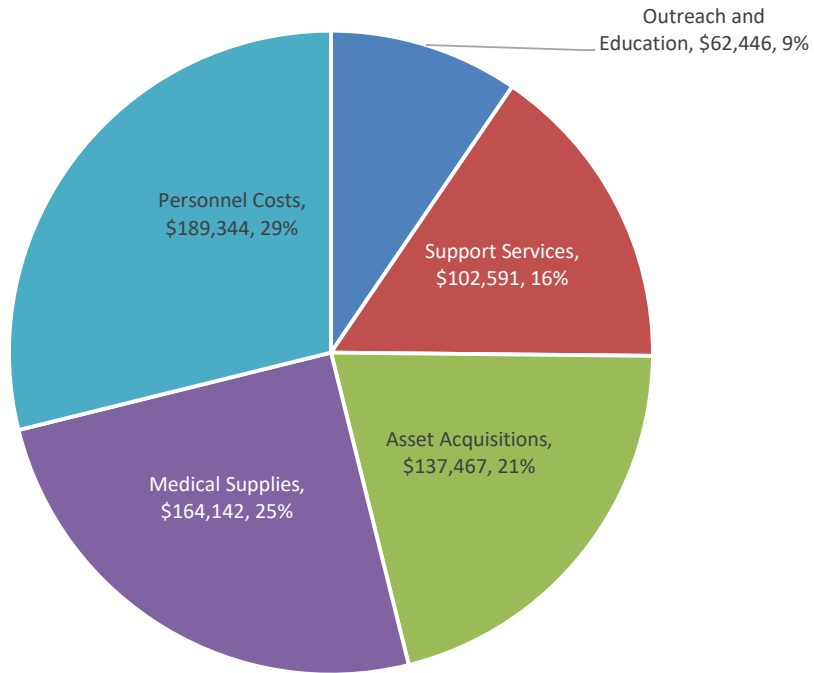


This excludes Capital Expenditure (Equipment) and does not include SMB \$ 14,813 & Dr Boris training \$6500 that is allocated to the year 2023.

It is record of only the Operations (Recurrent Costs).

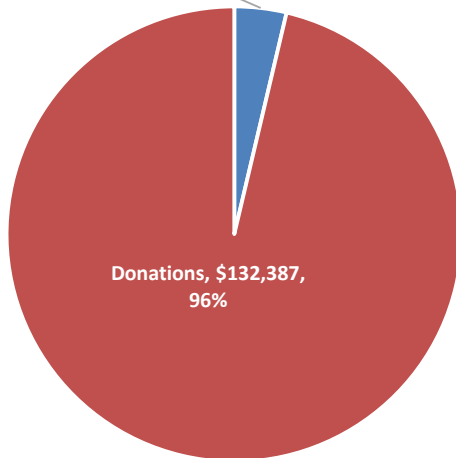
Donations are mainly CHERA \$28,796 & Baylor Uganda \$65,170 (cash and ARVS in kind) .

KCHEF 2022 - Total Expenditure (\$655,900)



KCHEF 2022 - Source of Funds for Capital Expenditure (\$137,467)

Medical Centre Collections, \$5,080, 4%



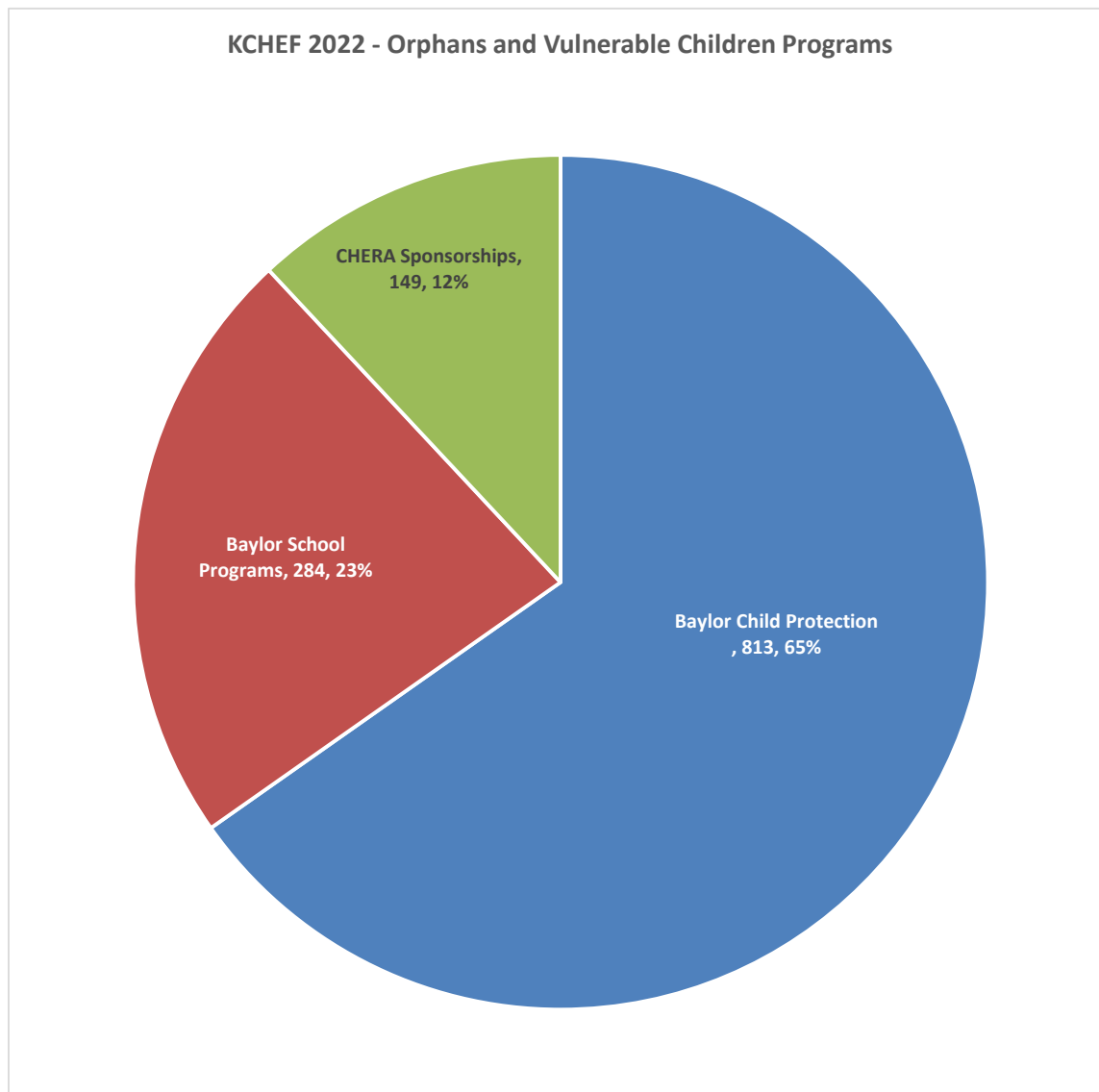
\$231,657 allocated to construction of the New Kasese Community Medical Centre is not included in this expenditure. It is deferred and will be reported in the 2023 report.

\$6207 that was granted to facilitate the fundraising activities has also been recovered from the fundraising collections and added to this construction reserve.

Thanks to CHERA for the donations that we invest in development and equipment. The story of this almost 100% dependency for capital fund is not different for of any years earlier.

Good Equipment is with no doubt a very strong component of the quality of our

The donation of \$25,439 from CHERA and \$815 from the Alumni Association supported 149 OVCs to be in school (59 in Primary, 40 in Secondary and 50 in Tertiary/University). 11 of these children completed their studies and will graduate in 2023. Baylor Uganda supported 284 children infected or directly affected by HIV with school logistics. The Baylor program also provides Child protection services, psychosocial support and social economic strengthening to households of 813 OVC that are infected or directly affected by HIV Aids



The take off of the New Kasese Medical Centre dissolved many challenges that we faced in 2022. For some time there will seem to just be one side of life. The bright one. 2022 was a recovery year from very tough times in 2020 and 2021. We feared that we would lose staff. That did not happen. We retained 46 out of the 52. Staff retention is a critical matter for health care services and we are delighted even amidst the threats. This is still relatively contained. Dr Boris started his 3-year course on 2nd



THIS PEOPLE OF KASESE CANNOT THANK CHERA ENOUGH FOR THIS MEGA DEVELOPMENT THAT IS ALREADY UNVEILING. THERE IS A BIT OF MODIFICATION TO THIS DESIGN THAT MADE IT LOOK EVEN BETTER

I OWE YOU AN UPDATE ON THIS PROJECT AND I WILL PROVIDE ONE AS SOON AS MY DESK HAS SOME SPACE

BUT PLEASE BE REST ASSURED THAT WE ARE DOING THE BEST WE CAN TO DELIVER THIS PROJECT IN THE MOST EFFECTIVE AND EFFICIENT WAY

I WILL ALSO SHARE WITH YOU THE 2023 BUDGET SUMMARY IN THE NEXT FEW DAYS.

ONCE AGAIN THANK YOU VERY MUCH FOR ALL YOU DO TO SUPPORT OUR CAUSE OF SOCIAL TRANSFORMATION OF THE LIVES OF THE PEOPLE OF KASESE